



# VCE JAPANESE

## INFORMATION GUIDE



Kilbreda College

# VCE JAPANESE

## RATIONALE

The study of Japanese contributes to student personal development in a range of areas including communication skills, intercultural understanding, cognitive development, literacy and general knowledge. Learning and using an additional language encourages students to examine the influences on their perspectives and society, and to consider issues important for effective personal, social and international communication. It enables students to examine the nature of language, including their own, and the role of culture in language, communication and identity.

## UNIT 1

### Area of Study 1

#### Interpersonal communication

In this area of study students develop their skills and knowledge to establish and maintain an informal, personal, spoken interaction in Japanese on a selected subtopic.

### Area of Study 2

#### Interpretive communication

In this area of study students locate and use information from two texts in Japanese, chosen from a written, spoken or audiovisual format.

### Area of Study 3

#### Presentational communication

Students present content related to the selected subtopic in Japanese in written form, which may include supporting visual elements.

## UNIT 2

### Area of Study 1

#### Interpersonal communication

In this area of study students participate in a written exchange in Japanese.

### Area of Study 2

#### Interpretive communication

In this area of study students extract information from texts provided in Japanese and respond to the texts in writing using elements of this information.

### Area of Study 3

#### Presentational communication

In this area of study students research cultural products or practices that demonstrate an aspect of the culture studied.

## Suggested themes, topics and subtopics

### The Individual

Personal identity and lifestyles

Health and wellbeing.

### Relationships

Neighbourhood/community relationships.

### Aspirations, education and careers

Future aspirations, employment opportunities.

### The Japanese-speaking communities

The Japanese-speaking communities

The arts, traditional culture, contemporary culture, Japanese customs and traditions, festivals.

### Significant people

Japanese people in the arts, sciences, sports, and business.

### Living in a Japanese community/visiting Japan

Tourist attractions in Japan.

### The world around us

Global and contemporary society

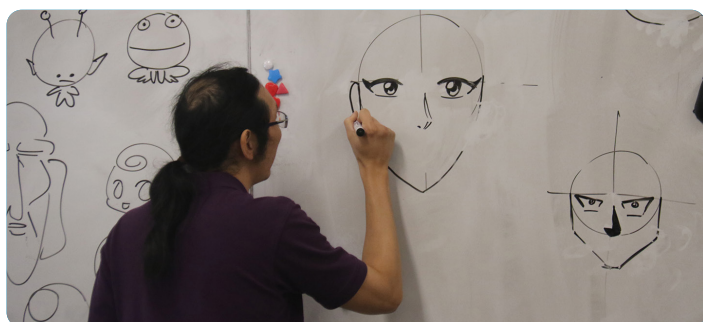
Environment, changes in family.

### Communication and media

The internet.

### Technology and science

Innovations, technological change.



# INFORMATION GUIDE

## SKILLS YOU WILL DEVELOP WHEN LEARNING A FOREIGN LANGUAGE

- Better career opportunities
- Builds multitasking skills
- Communication
- Creativity
- Enhanced cultural understanding
- Enhanced listening skills
- Improved decision-making
- Improves English language ability
- Improves memory
- Increased attention span
- Increased problem solving
- Learn about other cultures
- Strengthened study skills

### UNIT 3

#### Area of Study 1

##### Interpersonal communication

In this area of study students develop skills and knowledge to resolve a personal issue by negotiating a mutually agreeable outcome in a spoken exchange in Japanese on a selected subtopic.

#### Area of Study 2

##### Interpretive communication

In this area of study students extract information from three or more texts relating to the selected subtopic, and create written responses to specific questions or instructions in Japanese.

#### Area of Study 3

##### Presentational communication

In this area of study students create an extended original piece of personal, informative or imaginative writing in Japanese to express ideas, thoughts or responses on an aspect of the selected subtopic.

### UNIT 4

#### Area of Study 1

##### Interpersonal communication

In this area of study students research and present information on a cultural product or practice from a Japanese speaking community.

#### Area of Study 2

##### Interpretive communication

In this area of study students analyse and present in writing information extracted from written, spoken and viewed texts in Japanese on a selected subtopic.

#### Area of Study 3

##### Presentational communication

In this area of study students present information, concepts and ideas in an extended written response to persuade an audience of a point of view or evaluate existing ideas and opinions about an aspect of the selected subtopic.



To find out more information  
about VCE Japanese  
at Kilbreda College, please contact:

**Giovanni Di Fabrizio**

**Learning Leader: Languages**

[giovanni.difabrizio@kilbreda.vic.edu.au](mailto:giovanni.difabrizio@kilbreda.vic.edu.au)

---

## **Kilbreda College**

118 Mentone Parade, Mentone VIC 3194

(03) 9581 7766

**[kilbreda.vic.edu.au](http://kilbreda.vic.edu.au)**



This flyer is correct as of July 2024, however may be subject to change.

